

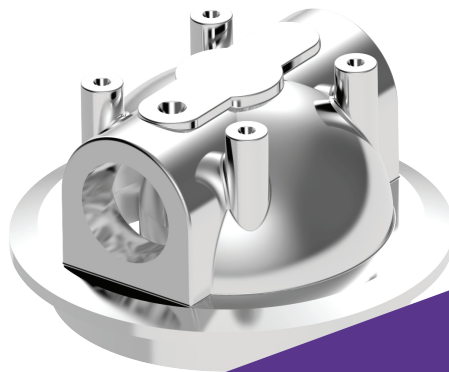
TA

Clamp Type Single Filter Cartridge Housing

Design P.	150psi
Design T.	100
Max Operating P.	150psi
Operating T.	75

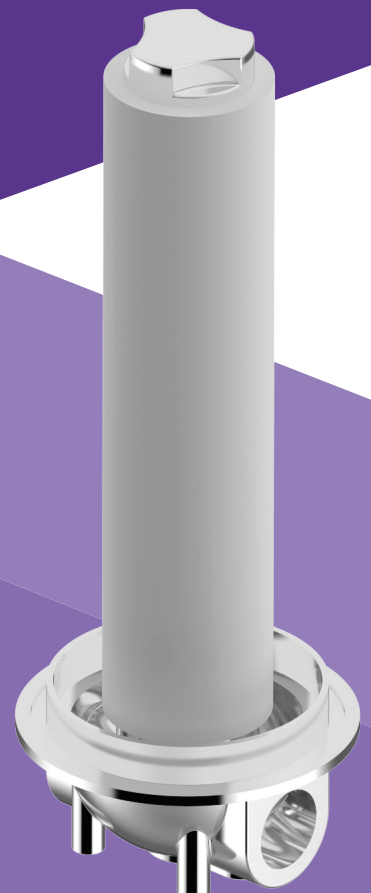
Features

1. Lightweight and easy installation.
2. Wall-hanging installation makes space-saving.
3. Well O-ring groove design improves sealing and prevents loosening
4. One well design pedestal is available with both DOE and SOE cartridge specification.
5. Clamp type closure for fast installation and easy filter cartridge change-outs without tool.
6. Well design of foolproof spring with cartridge.



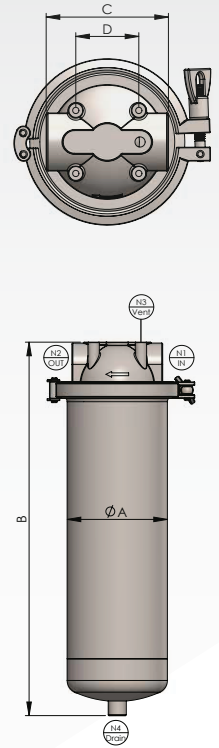
Applications

Chemicals	RO Pre-filtration process
Petrochemical	Water filtration
Beverage Industry	Pharmaceutical
Liquor manufacture	Experiment Process
Food industry	Gas Filter
Electroplating Industry	Sewage treatment
High temperature manufacturing processes	Electronic Industry



TA Ordering Guide

TA	1	4	F	1	PF	E	EA
Model	Length	Material	Adapters	Connection Size	Connection Type	O-ring	Outside / Inside Finishing
TA	1-10" 2-20" 3-30"	4-304 6-316 6L-316L	F-DOE 5-222 7-226	43-3/4" 1-1"	150P-ANSI 10K-JIS PN10-DIN C-CLAMP PF-PTF NF-NPTF	E-EPDM N-NBR V-VITON S-Silicon TS-TEFLON +SILICON	A-Acid-pickling E-Electropolishing P-Polishing



TA Specifications

Model	Length of Cartridge	A m/m	B m/m	C m/m	D m/m	E m/m	M3/Hr	GPM	Weight
TAH1	10"	Ø106	395	97	50	165	1	5	4kg
TAH2	20"	Ø106	645	97	50	165	2	10	5.5kg
TAH3	30"	Ø106	845	97	50	165	3	15	7kg