

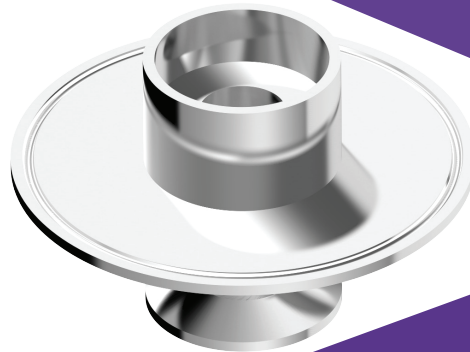
# SJ

## Sanitary Single Filter Cartridge Housing (Straight Type)

Design P.	150psi
Design T.	100
Max Operating P.	150psi
Operating T.	75

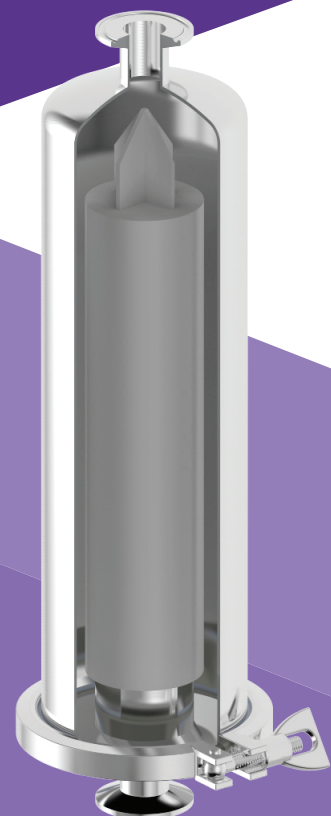
## Features

1. Straight type air filter housing is designed for air filter application and also for other liquid filter applications.
2. 0.2RA surface roughness.
3. Complete inside and outside finishing with no blind spot to prevent residual dirt.
4. Tightly seal of base and shell with clamp closure prevents spillage.



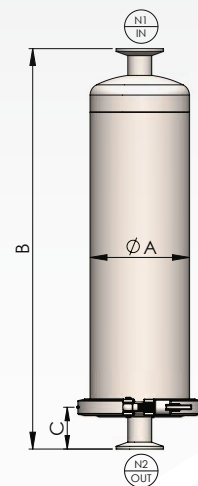
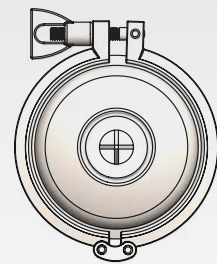
## Applications

Chemicals	RO Pre-filtration process
Petrochemical	Water filtration
Beverage Industry	Pharmaceutical
Liquor manufacture	Experiment Process
Food industry	Gas Filter
Electroplating Industry	Sewage treatment
High temperature manufacturing processes	Electronic Industry



## SJ Ordering Guide

SJ	1	6	5	1	C	S	PP
Model	Length	Material	Adapter	Connection ize	Connection Type	O-ring	Outside / Inside Finishes
SJ	1-10" 2-20" 3-30"	4-304 6-316 6L-316L	F-DOE 5-222 7-226	41-1/4" 21-1/2" 43-3/4" 1-1" 121-1-1/2" 2-2" 221-2-1/2"	150P-ANSI 10K-JIS PN10-DIN C-CLAMP PF-PTF NF-NPTF PM-PTM NM-NPTM	E-EPDM N-NBR V-VITON S-SILICON TS-TEFLON +SILICON	E- Eletropolishing P-Polishing



## SJ Specifications

Model	Length of Cartridge	A m/m	B m/m	C m/m	Weight
SJ1	10"	Ø106	430.5	43.5	3.5kg
SJ2	20"	Ø106	682.5	43.5	4.8kg
SJ3	30"	Ø106	930.5	43.5	6.2kg